

Injection Port Liners

LinerGOLD GC Liners

The GOLD standard in GC liner performance!

- **Increased accuracy and sensitivity in analysis** – LinerGOLD prevents the loss of sensitive compounds in analysis
- **Lower detection limits** – when analyzing active and sensitive compounds
- **Excellent reproducibility** – gives confidence in your results from liner to liner – setting the GOLD standard

The GOLD standard in liner consistency

Consistency in your GC liner is of paramount importance – you expect to see a consistently high level of performance time after time. Thermo Scientific™ LinerGOLD™ GC liners are manufactured and tested to ensure that you have confidence with every liner that it installed onto your GC system.

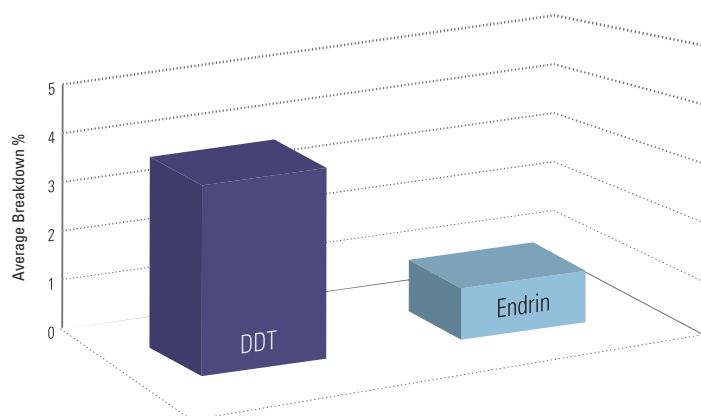


Figure 1: Endrin and DDT breakdown test results showing the lot-to-lot reproducibility and low levels of inertness of LinerGOLD

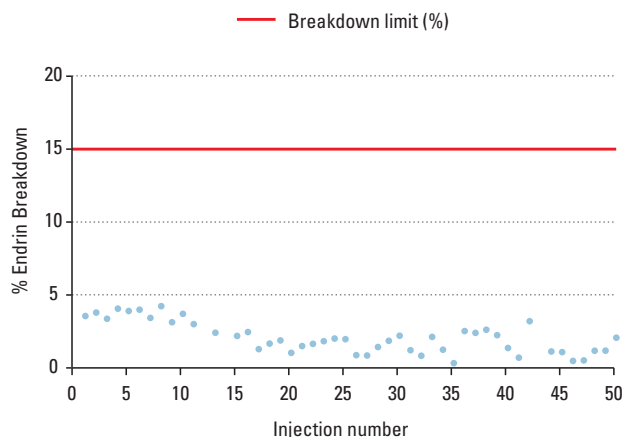
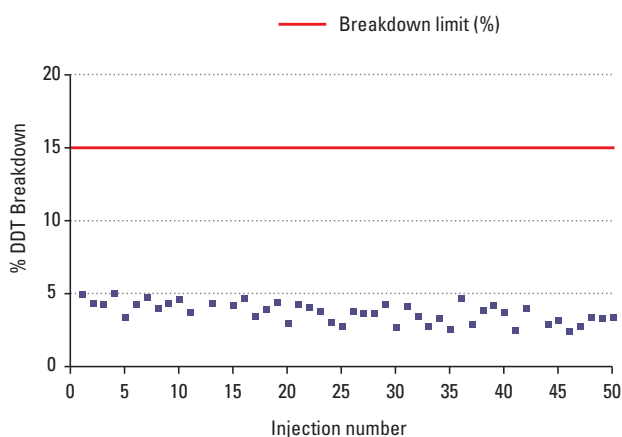
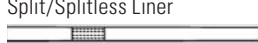
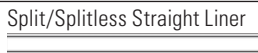











Figure 2: Compound degradation after 50 injections – LinerGOLD exhibits minimal breakdown

LinerGOLD GC Liners for Thermo Scientific TRACE 1300 Series and Agilent Instruments

Injection Type	ID x OD (mm)	Length (mm)	Packing	Cat. No. 1 Pack	Cat. No. 5 Pack	Cat. No. 25 Pack
 Split/Splitless Liner	4 x 6.3	78.5	Quartz Wool	453A0164-UI	453A2265-UI	453A1262-UI
 Split/Splitless Straight Liner	4 x 6.3	78.5	No	453A0294-UI	453A1295-UI	453A2292-UI
 Splitless Liner with Single Taper	4 x 6.3	78.5	No	453A0344-UI	453A1345-UI	453A2342-UI
 Splitless Liner with Single Taper	4 x 6.3	78.5	Quartz Wool	453A0924-UI	453A1925-UI	453A2922-UI
 Splitless Liner with Double Taper	4 x 6.3	78.5	No	453A0354-UI	453A1355-UI	453A2352-UI
 Precision Liner	4 x 6.3	78.5	Quartz Wool	453A0254-UI	453A1255-UI	453A1252-UI
 Direct Straight Liner	1 x 6.3	78.5	No	453A0334-UI	453A1335-UI	453A2332-UI

LinerGOLD GC Liners for Thermo Scientific TRACE Ultra and FOCUS Instruments

Injection Type	ID x OD (mm)	Length (mm)	Packing	Cat. No. 1 Pack	Cat. No. 5 Pack	Cat. No. 25 Pack
 Direct Straight Liner	5 x 8	105	No	45310030-UI	45350030-UI	45354030-UI
 Split Straight Liner	3 x 8	105	No	45310031-UI	45350031-UI	45354031-UI
 Splitless Liner	3 x 8	105	No	45310032-UI	45350032-UI	45354032-UI
 Splitless Liner	5 x 8	105	No	45351033-UI	45350033-UI	45354033-UI
 Precision Liner	5 x 8	105	Quartz Wool	453T0905-UI	453T1905-UI	453T4905-UI
 Splitless Precision Liner	5 x 8	105	Quartz Wool	453T0999-UI	453T2999-UI	453T4999-UI
 Baffled PTV Liner	2 x 2.75	120	No	453T0845-UI	453T2845-UI	453T4845-UI

